

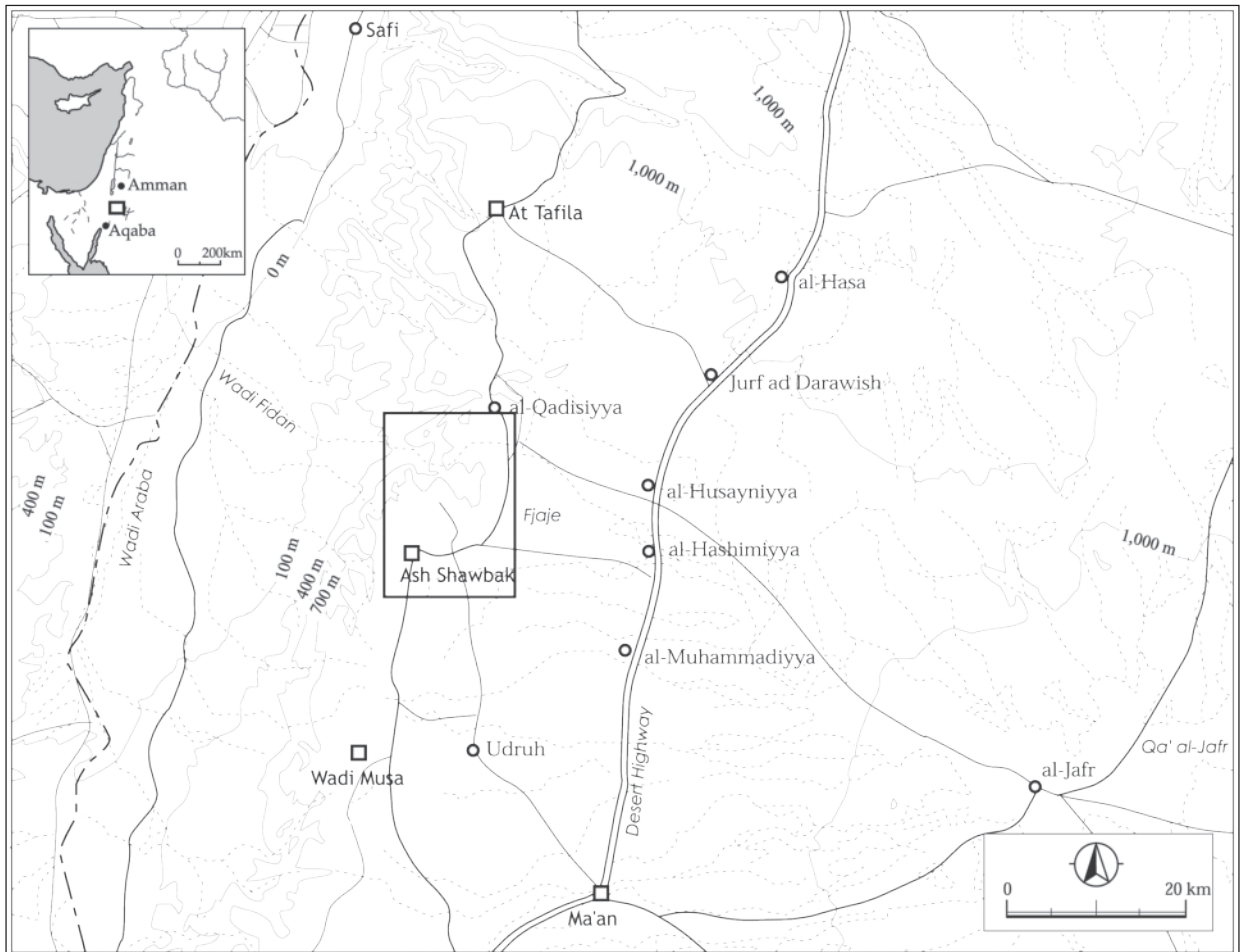
A PRELIMINARY REPORT ON THE SHAWBAK NORTH ARCHAEOLOGICAL PROJECT (SNAP): SUMMER 2011

Sumio Fujii, Masatoshi Yamafuji and Yui Arimatsu

Introduction

As a part of our major research project (JBPP: the Jafr Basin Prehistoric Project), we have started a sub-project (SNAP: the Shawbak North Archaeological Project) with a view to shedding new light on the general occupational history of the hilly terrain at the western edge of the Jafr Basin. This area is a nodal point of surrounding topographic zones, including the

Karak/Ṭafila highlands to the north, the Wādī Mūsā intermountain plain to the south, the Jafr Basin to the east, and the Wādī Faynān lowland drainage basin to the west (Fig. 1). Despite its geographical importance, it has so far been poorly investigated: major sites investigated to date are limited to Palaeolithic flint scatters along the al-Fujayj escarpment (Rollefson 1981a, 1981b, 1985), the Neolithic settlement



1. Location of the research area.

of Wādī Baddā (Fujii 2007), the dolmen field of Umm at-Ṭuwayrāt (Dubis *et al.* 2004; Scheltema 2008), Iron Age sites around Khirbat ad-Dabba (Whiting *et al.* 2008, 2009) and Shawbak Castle. Considering the rich archaeological potential of the area, the present state of investigation is far from satisfactory.

Our new research project is intended to fill the information gap at this nodal point and, in so doing, provide a basis for synthesizing the separate data sets in surrounding areas. The project anticipates a total research period of seven years, from 2010 to 2017. The first phase (2010-2012) aims to build up a comprehensive database of archaeological sites in the research area. The second phase (2013-2017), on the other hand, will be devoted to soundings and excavations at several promising sites located in the first phase. The first field season was conducted in the summer of 2010, focusing on the northern half of Area 1. The survey located a total of twenty sites ranging in date from a Palaeolithic flint scatter to a Nabatean settlement. The second survey, conducted between 5 and 8 October 2011, located sixteen sites in the western half of Areas 4 and 7. This report briefly summarizes the results of these investigations.

Research Area

Our research area consists of the vast depression below the al-Fujayj escarpment and a part of the hilly terrain in the south, covering an area extending *ca.* 12km north - south by *ca.* 10km east-west. It is defined by the following four topographical features: Wādī al-Ḥmrā and its northern slopes to the north, the main highway passing through the town of Shawbak to the south, the Fujayj escarpment to the east and the steep slopes leading down to the Faynān area to the west (**Fig. 2**).

The research area includes a few major drainage systems. To begin with, Wādī Ṭarṭar flows northward from the northern flank of the hilly terrain and joins Wādī an-Nakhīl roughly in the center of the research area. Wādī al-Bustān drains north-eastward from the hilly terrain and likewise joins Wādī an-Nakhīl, which in turn runs westward down to the Faynān area. These three drainage systems divide the research field into seven survey areas with various topographic traits.

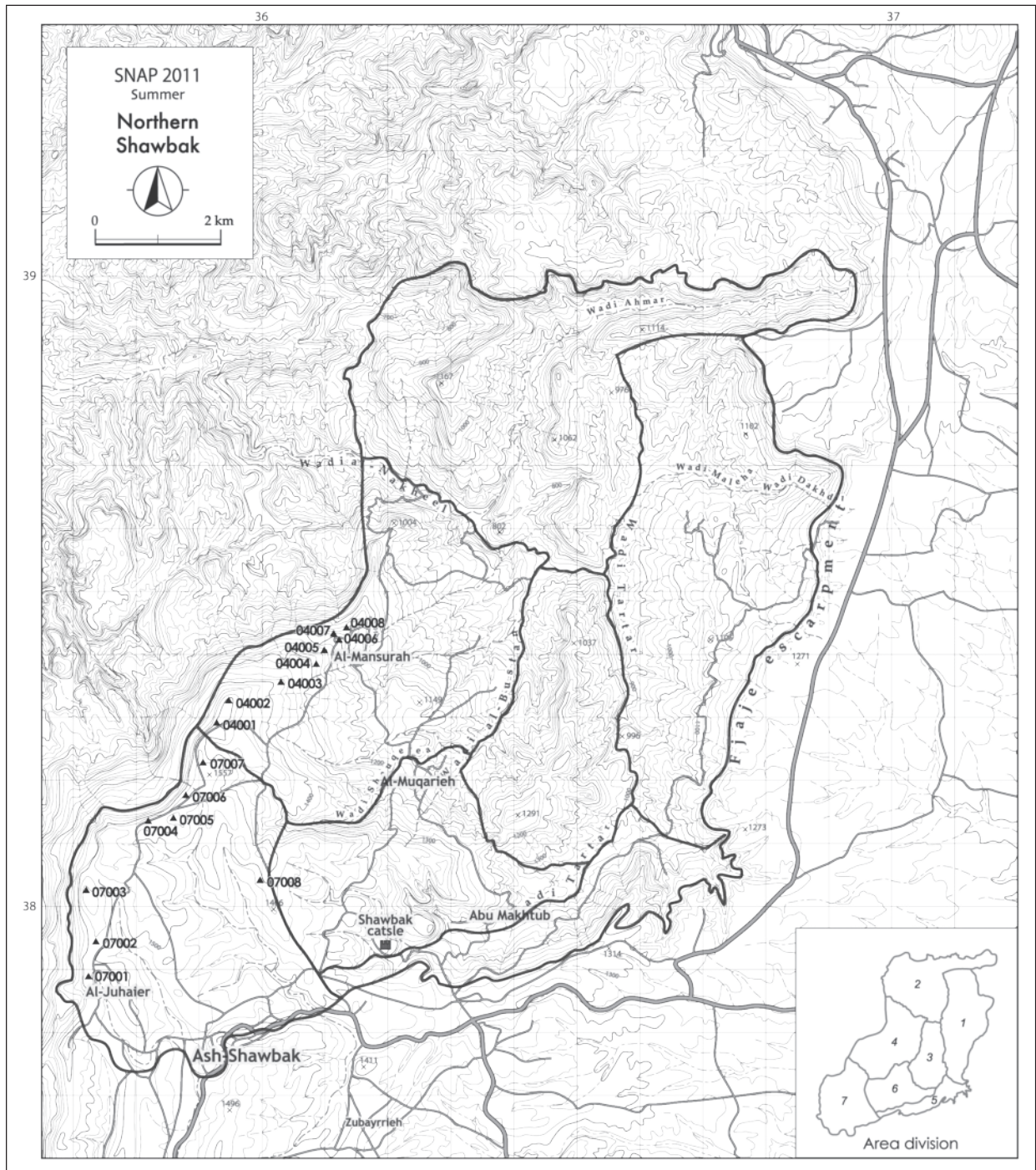
The depression area is under arid climatic conditions, being poor in vegetation. For this reason, no traditional settlements are existent. However, due to its unique topography, there are several perennial springs and streams (e.g. Wādī an-Nakhīl and Wādī Shuqariyyah), which provide drinking water for local herders. The hilly terrain, on the other hand, is relatively rich in water supply and several settlements with residents engaged in horticulture and pastoralism are dotted throughout the area. Thus, the research area can be divided into two: the arid depression to the north and the relatively fertile hilly terrain to the south.

The second survey, our main concern here, focused on the elongated hilly country in the western half of Areas 4 and 7. The survey took place by means of transects on foot, and a total of 64 hours were devoted to the fieldwork. The identification of sites was based on artifact scatters and / or evidence of structural remains. Every site located was plotted on a topographic map and registered according to the SNAP site code system. The surface collection consisted of 583 pottery sherds and 8 flint artifacts, all of which were registered and carefully recorded.

Results of the Investigation

The survey located a total of sixteen sites, including three sites (Sites 04002, 07001 and 07004) that had been tentatively registered during the first field season. The following description is made in an ascending order of site registration number, regardless of supposed site date(s). The register number is five-digit; the first two digits indicate an area number and the last three digits a site serial number within each area. The following description includes site name, coordinates for location (according to WGS 84), elevation, site location, site type, site size, preservation state, surface finds, structural remains, possible date and comments. Period abbreviations are as follows:

EB:	Early Bronze Age
MB:	Middle Bronze Age
LB:	Late Bronze Age
Ir:	Iron Age
Hel:	Hellenistic period
Nab:	Nabataean period
Rom:	Roman period



2. Registered sites of the summer 2011 field season.

Byz: Byzantine period
Isl: Islamic period

Site 04001

Site name: unknown.
Coordinates: 30°33.726 N; 35°31.997 E.
Elevation: 1508m.

Site location: on the upper part of a steep slope overlooking the Faynān gorge (**Fig. 3: 1**).
Site type: artifact scatter.
Site size: unknown.
Preservation: partly destroyed by a modern road.
Surface finds: 5 pottery sherds.
Structural remains: unidentified.



1. Site 04001 (looking N).



2. Site 04002 (looking N).



3. Site 04003.



4. Site 04004 (looking SE).



5. Site 04005 (looking W).



6. Site 04006 (looking SE).



7. Site 04007 (looking S).



8. Site 04008 (looking S).

3. General view of registered sites in Area 4.

Possible date: Rom - Byz.
Comments: no special comment.

Site 04002

Site name: unknown.
Coordinates: 30°33.933 N; 35°32.126 E.
Elevation: 1513m.
Site location: at the top of a steep slope overlooking the Faynān gorge (**Fig. 3: 2**).
Site type: isolated structural remains and artifact scatter.
Site Size: ill-defined.
Preservation: relatively good.
Surface finds: 102 pottery sherds (**Fig. 4: 1-6, Fig. 5: 1-6**).
Structural remains: several masonry wall alignments constructed with dressed limestone boulders up to ca. 1 m long.
Possible date: Hel, Nab, Rom-Byz (majority of finds) and Isl.
Comments: Nabataean fine ware sherds concentrated on the eastern part of the site.

Site 04003

Site name: unknown.
Coordinates: 30°34.055N; 35°32.638E.
Elevation: 1391m.
Site location: on the upper part of a steep slope overlooking the Faynān gorge (**Fig. 3: 3**).
Site type: isolated structural remains and artifact scatter.
Site size: ill-defined.
Preservation: heavily damaged.
Surface finds: 6 pottery sherds.
Structural remains: poorly preserved stone alignments of dressed limestone boulders.
Possible date: Rom-Byz and Isl.
Comments: no special comments.

Site 04004

Site name: unknown.
Coordinates: 30°34.254N; 35°33.085E.
Elevation: 1301m.
Site location: on the upper part of a steep slope overlooking the Faynān gorge (**Fig. 3: 4**).
Site type: isolated structural remains and artifact scatter.
Site size: ill-defined.
Preservation: heavily damaged by recent cultivation.
Surface finds: 69 pottery sherds (**Fig. 4: 7-10,**

Fig. 5: 7-10).

Structural remains: unidentified.
Possible date: EB, Ir, Hel, Nab and Rom-Byz (majority of finds).
Comments: no special comment.

Site 04005

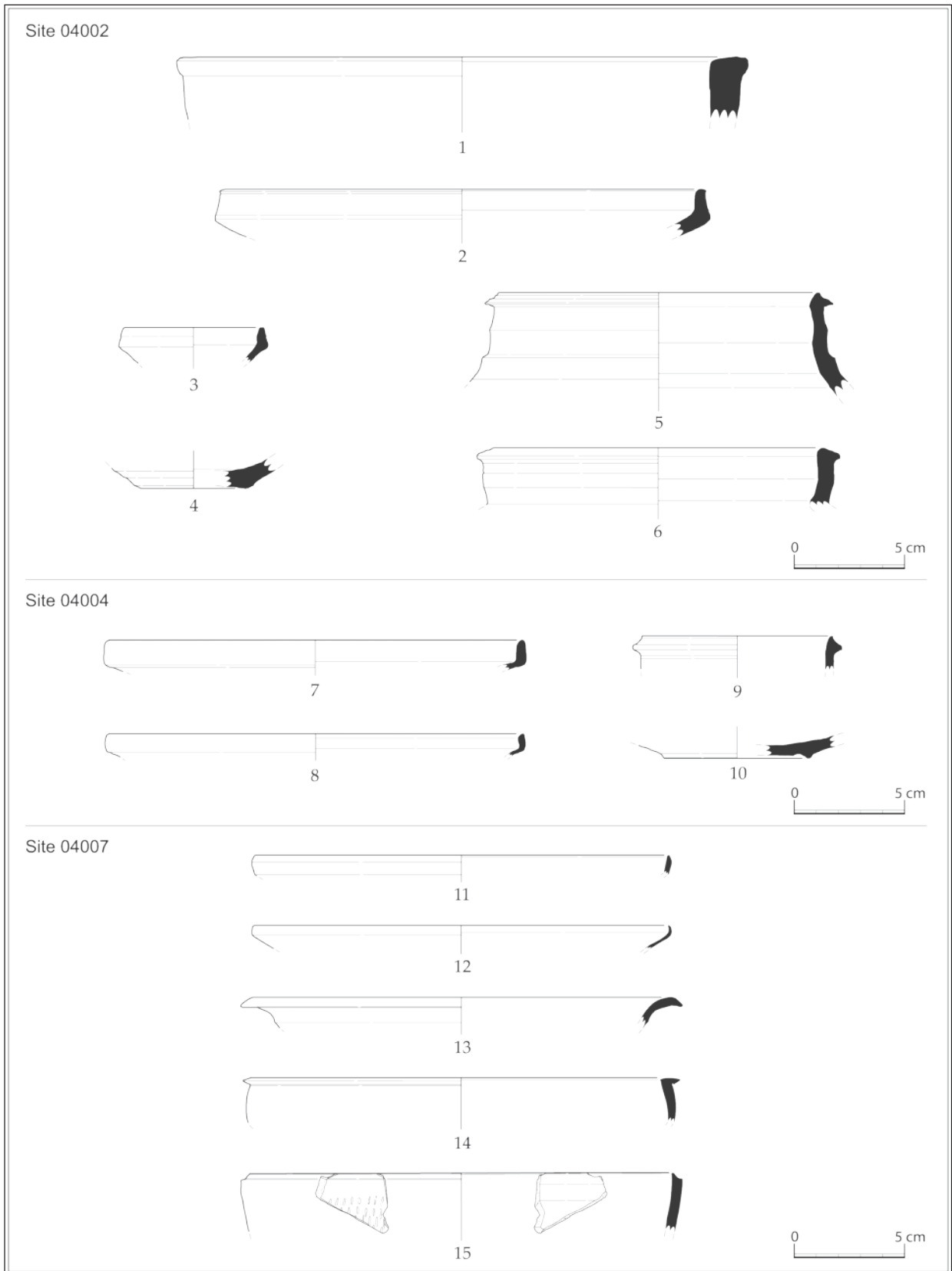
Site name: unknown.
Coordinates: 30°34.346N; 35°33.093E.
Elevation: 1271m.
Site location: on the upper part of a steep slope overlooking the Faynān gorge (**Fig. 3: 5**).
Site type: cemetery?
Site size: ill-defined.
Preservation: partly damaged.
Surface finds: 38 pottery sherds.
Structural remains: a rectangular cist constructed of large limestone slabs.
Possible date: Rom-Byz (majority of finds) and Isl.
Comments: no special comment.

Site 04006

Site name: unknown.
Coordinates: 30°34.390N; 35°33.114E.
Elevation: 1213m.
Site location: on the upper part of a steep slope overlooking the Faynān gorge (**Fig. 3: 6**).
Site type: artifact scatter.
Site size: ill-defined.
Preservation: heavily damaged by recent cultivation.
Surface finds: 29 pottery sherds.
Structural remains: unidentified.
Possible date: Rom-Byz.
Comments: no special comment.

Site 04007

Site name: unknown.
Coordinates: 30°34.513N; 35°33.251E.
Elevation: 1199m.
Site location: on a gentle slope to the north-west of Site 04006 (**Fig. 3: 7**).
Site type: artifact scatter.
Site size: ill-defined.
Preservation: -
Surface finds: 67 pottery sherds (including Nabatean fine ware sherds (**Fig. 4: 11-15, Fig. 5: 11-15**)).
Structural remains: unidentified.
Possible date: Ir, Hel, Nab, Rom-Byz (majority of finds) and Isl.
Comments: no special comment.



4. Selected small finds from registered sites in Area 4.

Fig.: no.	Period	Form	Color			Inclusion	Note
			interior	exterior	core		
4: 1	Rom-Byz	Bowl	orange (2.5YR6/6)	light yellow orange (10YR8/4)	orange (2.5YR6/6)	black, brown and white sand 0.1-1mm in diameter	wet smooth with wheel
4: 2	Rom-Byz	Bowl	orange (2.5YR6/6)	orange (2.5YR6/6)	orange (2.5YR6/6)	black sand 0.1-0.5mm in diameter	wet smooth with wheel
4: 3	Rom-Byz	Bowl	orange (2.5YR6/6)	orange (2.5YR6/6)	orange (2.5YR6/6)	black sand 0.1mm in diameter, mica	wet smooth with wheel
4: 4	Rom-Byz	(Base)	brownish gray (10YR5/1-4/1)	brownish gray (10YR5/1-4/1)	brownish gray (10YR5/1-4/1)	gray sand 0.1mm in diameter	wet smooth with wheel
4: 5	Rom-Byz	Jar	orange (7.5YR6/6)	dull orange (5YR6/3)	orange (7.5YR6/6)	white and black sand 0.5-1mm in diameter	wet smooth with wheel
4: 6	Rom-Byz	Jar	orange (2.5YR6/6-6/8)	orange (2.5YR6/6-6/8)	orange (2.5YR6/6-6/8)	black and brown sand 0.5-1mm in diameter, with a little mica	wet smooth with wheel
4: 7	Nab	Bowl	orange (2.5YR6/6)	orange (2.5YR6/6)	orange (2.5YR6/6)	black sand 0.1mm in diameter	wet smooth with wheel
4: 8	Nab	Bowl	orange (2.5YR6/6)	orange (2.5YR6/6)	orange (2.5YR6/6)	black sand 0.1mm in diameter	wet smooth with wheel
4: 9	Rom-Byz	Jar	orange (2.5YR6/6)	orange (2.5YR6/6)	orange (2.5YR6/6)	calcite 0.5-2mm in diameter, black and white sand 0.5-1mm in diameter	wet smooth with wheel
4: 10	Rom-Byz	(Base)	bright reddish brown (2.5YR5/6)	dull reddish brown (2.5YR5/3)	bright reddish brown (2.5YR5/6)	black and brown sand 0.1-2mm in diameter, a little mica	wet smooth with wheel
4: 11	Nab	Bowl	orange (2.5YR6/8)	orange (2.5YR6/8)	orange (2.5YR6/8)	none	wet smooth with wheel
4: 12	Nab	Bowl	orange (5YR7/6-7/8)	orange (5YR7/6-7/8)	orange (5YR7/6-7/8)	none	careful wet smooth
4: 13	Nab	Bowl	orange (5YR6/6-6/8)	orange (5YR6/6-6/8)	dull orange (7.5YR7/4-6/4)	black and brown sand 0.1-1mm in diameter	wet smooth with wheel
4: 14	Nab	Bowl	orange (2.5YR6/6-6/8)	orange (2.5YR6/6-6/8)	orange (2.5YR6/6-6/8)	black and white sand 0.1-0.5mm in diameter	careful wet smooth
4: 15	Nab	Bowl	orange (2.5YR6/6-6/8)	orange (2.5YR6/6-6/8)	orange (2.5YR6/6-6/8)	black sand 0.1mm in diameter	careful wet smooth, rolling incised dots on ext. surface

5. List of selected small finds from registered sites in Area 4.

Site 04008

Site name: unknown.

Coordinates: 30°34.575N; 35°33.251E.

Elevation: 1176m.

Site location: located on a gentle slope to the north-west of the settlement of al-Manşurah (Fig. 3: 8).

Site type: artifact scatter.

Site size: ill-defined.

Preservation: -

Surface finds: 25 pottery sherds.

Structural remains: unidentified.

Possible date: Ir (?), Rom-Byz (majority of finds) and Isl.

Comments: no special comments.

Site location: at the top of a gentle slope *ca.* 0.3km north of al-Juhayr (Fig. 6: 1).

Site type: cairn field.

Site size: *ca.* 3ha (*ca.* 300m north-south by *ca.* 100m east - west).

Surface finds: 20 pottery sherds (Fig. 7: 1-9, Fig. 8: 1-9).

Preservation: partly destroyed by modern houses.

Structural remains: several exposed elongated cists.

Possible date: EB IB (majority of finds), Hel and Rom-Byz.

Comments: EB coarse ware sherds (Fig. 7: 1-5) predominate, but Roman - Byzantine fine ware sherds were also present (Fig. 7: 6-9).

Site 07001

Site name: Khirbat al-Juhayr.

Coordinates: 30°31.560N; 35°30.747E.

Elevation: 1507m.

Site 07002

Site name: unknown.

Coordinates: 30°31.888N; 35°30.829E.

Elevation: 1506m.

Site location: on a gentle hill *ca.* 0.5km north of



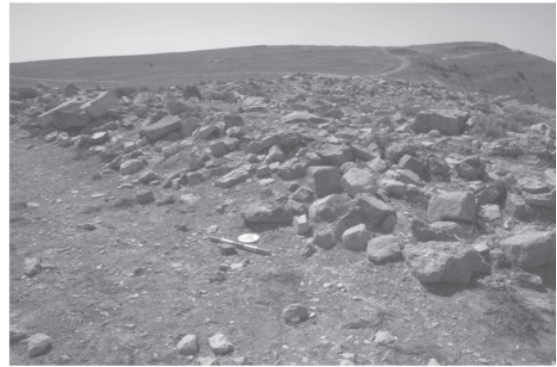
1. Site 07001 (looking N).



2. Site 07002 (looking S).



3. Site 07003 (looking S).



4. Site 07004 (looking SW).



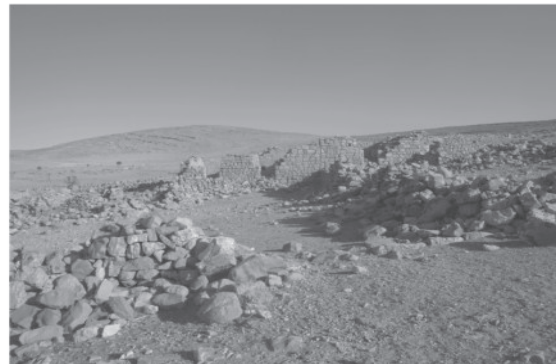
5. Site 07005 (looking S).



6. Site 07006 (looking N).



7. Site 07007 (looking N).



8. Site 07008 (looking N).

6. General view of registered sites in Area 7.

Site 07001 (Fig. 6: 2).

Site type: artifact scatter.

Site size: *ca.* 0.4ha (*ca.* 100m north-south by *ca.* 40m east-west).

Preservation: -

Surface finds: 8 pottery sherds and 1 flint artifact.

Structural remains: several stone alignments.

Possible date: Hel, Rom-Byz and Isl.

Comments: no special comment.

Site 07003

Site name: unknown.

Coordinates: 30°32.307N; 35°30.714E.

Elevation: 1551m.

Site location: an edge of the western escarpment (**Fig. 6: 3**).

Site type: artifact scatter.

Site size: *ca.* 1ha (*ca.* 100m north - south by *ca.* 100m east-west).

Preservation: heavily damaged.

Surface finds: 12 pottery sherds and 1 flint artifact.

Structural remains: several intermittent stone alignments *ca.* 5m long by *ca.* 0.5m wide.

Possible date: Rom-Byz and Isl.

Comments: no special comment.

Site 07004

Site name: unknown.

Coordinates: 30°32.875N; 35°31.305E.

Elevation: 1525m.

Site location: an edge of the western escarpment (**Fig. 6: 4**).

Site type: cairn field, settlement (?).

Site size: *ca.* 1.3ha (*ca.* 250m north - south by *ca.* 50m east-west).

Preservation: partially plundered.

Surface finds: 94 pottery sherds and 6 flint artifacts.

Structural remains: several elongated cairns 5-7m long.

Possible date: EB IA, EB IB, (EB II) (the majority of pottery sherds were EB), Ir, Rom-Byz and Isl.

Comments: The distinctive EB IA pottery sherds (**Fig. 7: 10-11, Fig. 8: 10-20**) have parallel examples at 'En Esur and Yiftah'el (Yannai 2006: 92, fig. 4. 71: 3; Braun 1997: fig. 9. 5: 2, 9. 18: 1, 3). Also of significance is the occurrence of EB IB-II cooking pots and lamp bowls; the latter have

much in common with contemporary material from Tel Arad in the northern Negev (Amiran *et al.* 1978: pl. 13: 7, 19, 22: 30 etc.). Similar finds have also been confirmed in Stratum III (EB II) at Bāb adh-Dhrā' (Rast and Shaub 2003: pl. 31: 26, 33: 19).

Site 07005

Site name: unknown.

Coordinates: 30°32.966N; 35°31.576E.

Elevation: 1545m.

Site location: on a gentle slope *ca.* 0.5 km east of Site 07004 (**Fig. 6: 5**).

Site type: artifact scatter.

Site size: ill-defined.

Preservation: partly destroyed by modern road construction.

Surface finds: 20 pottery sherds.

Structural remains: several stone concentrations (cairns?).

Possible date: Ir, Hel, Nab and Rom-Byz.

Comments: no special comment.

Site 07006

Site name: unknown.

Coordinates: 30°33.100N; 35°31.738E.

Elevation: 1531m.

Site location: located on a gentle slope *ca.* 0.5 km north of Site 07005 (**Fig. 6: 6**).

Site type: artifact scatter.

Site size: *ca.* 0.6ha (*ca.* 80m north - south by *ca.* 70m east - west).

Preservation: -

Surface finds: 34 pottery sherds.

Structural remains: unidentified.

Possible date: Hel, Nab and Rom-Byz (majority of finds).

Comments: no special comment.

Site 07007

Site name: unknown.

Coordinates: 30°33.293N; 35°31.880E.

Elevation: 1540m.

Site location: on a gentle slope *ca.* 0.5km north of Site 07006 (**Fig. 6: 7**).

Site type: artifact scatter.

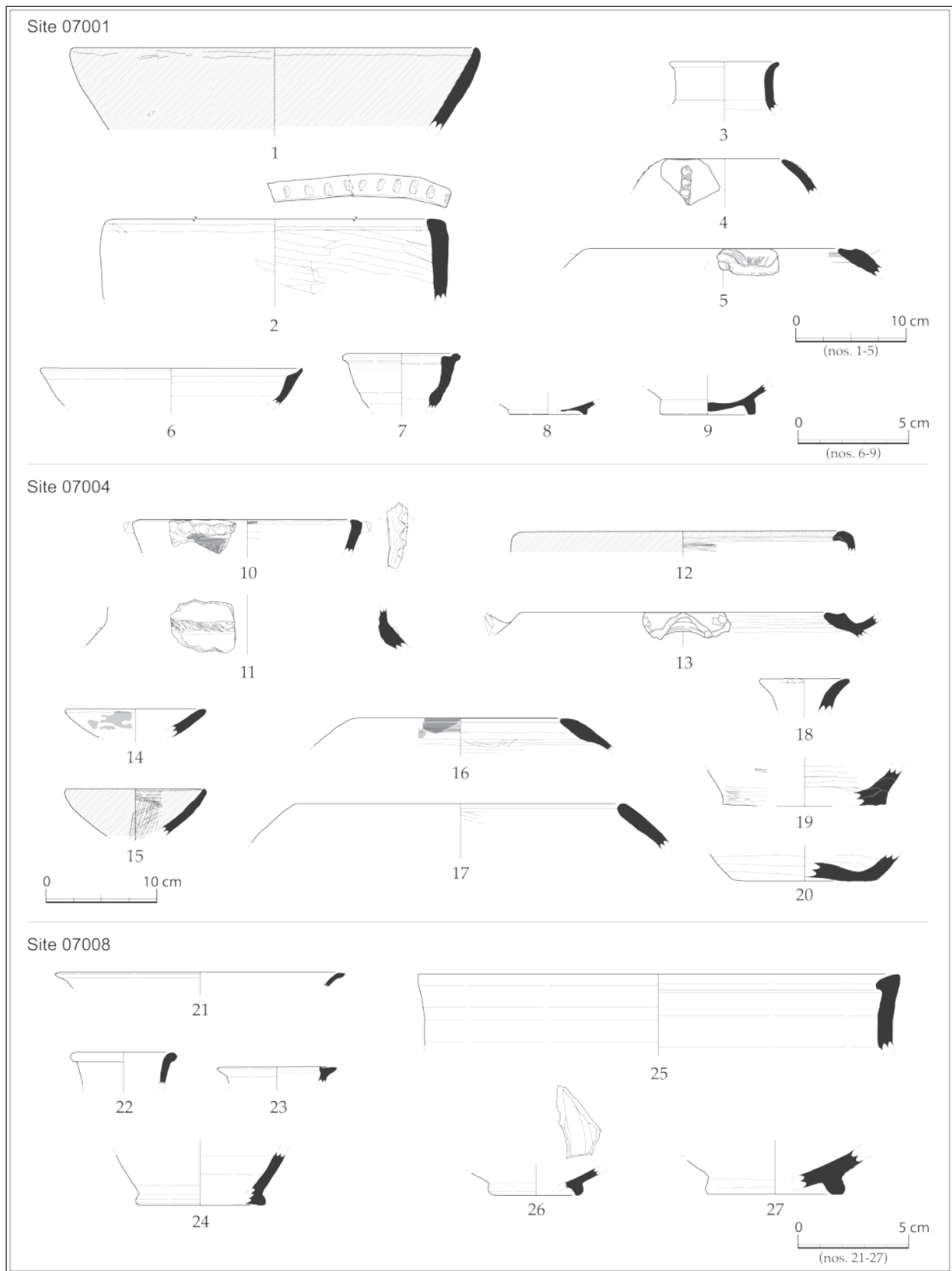
Site size: ill-defined.

Preservation: -

Surface finds: 15 pottery sherds.

Structural remains: none.

Possible date: Rom-Byz (majority of finds).



7. Selected small finds from registered sites in Area 7.

S. Fujii et al.: The Shawbak North Archaeological Project 2011

Fig.: no.	Period	Form	Color			Inclusion	Note
			interior	exterior	core		
7: 1	EB I	Bowl	dull yellow orange (10YR7/4)	dull orange (7.5YR6/4)	dull orange (7.5YR6/4)	amount of very small white sand, gray and white sand 1mm in diameter	Red slipped (5YR5/6) (partially remains)
7: 2	EB I	Krater	orange (7.5YR7/6)	dull orange (7.5YR6/4-7/4)	dull reddish brown (2.5YR5/4-4/4)	gray sand 1-2mm in diameter, white sand 1mm in diameter	Diagonally smoothed on int. surface, continuous thumb-indentations on rim, rim diameter = 596mm
7: 3	EB I	Jar	dull orange (7.5YR6/4)	dull orange (7.5YR6/4)	dull orange (7.5YR6/4)	amount of black sand 0.5mm in diameter, white sand 1-3mm in diameter, small amount of translucent sand 0.5mm in diameter and mica	Horizontally smoothed on ext. surface
7: 4	EB I	Holemouth Jar	bright reddish brown (2.5YR5/6)	bright reddish brown (2.5YR5/6)	Ext.: orange (2.5YR6/6) Int.: gray (5Y4/1)	white sand 0.5mm in diameter, amount of black sand 0.5mm in diameter	Indented rope decoration below exterior rim
7: 5	EB I	Holemouth Jar	orange (2.5YR6/6)	orange (2.5YR6/6), dull yellowish orange (10YR7/4)	bright reddish brown (2.5YR5/6)	amount of sand 1-4mm in diameter, white sand 1-2mm in diameter, black sand 1-3mm in diameter	Smoothed on both surfaces, spout below rim, coarse ware
7: 6	Rom-Byz	Bowl	dull orange (5YR6/4-6/6)	dull orange (5YR6/4-6/6)	dull orange (5YR6/4-6/6)	black sand 0.5mm in diameter	wet smooth with wheel
7: 7	Rom-Byz	Bowl	orange (5YR6/6)	orange (5YR6/6)	dull orange (5YR6/4)	black sand 0.5-1mm in diameter	wet smooth with wheel
7: 8	Rom-Byz	(Base)	orange (5YR7/6-6/6)	orange (5YR7/6-6/6)	orange (5YR7/6-6/6)	none	careful wet smooth
7: 9	Rom-Byz	(Base)	orange (5YR7/6-6/6)	orange (5YR7/6-6/6)	orange (5YR7/6-6/6)	none	careful wet smooth
7: 10	EB I(A)	Bowl	red (10R5/6)	orange (2.5YR6/6) brownish gray (5YR5/1) (soot mark?)	Ext.: brownish gray (7.5YR5/1) Int.: bright reddish brown (2.5YR5/6)	sand 1mm in diameter, very small amount of white sand 0.5-1mm in diameter	Horizontally smoothed on both surfaces, indented handle on exterior rim
7: 11	EB I(A)	Jar	orange (2.5YR6/6)	orange (2.5YR6/6), dull brown (7.5YR5/3)	brownish gray (10YR5/1)	amount of calcite fragments 1-3mm in diameter	Incised rope decoration on the joint of neck and shoulder, very coarse ware
7: 12	EB I(B)-II	Bowl	dull orange (7.5YR7/4) (slip on rim: dull reddish brown 2.5YR4/3)	orange (2.5YR6/6) (slip/wash: dull reddish brown 2.5YR4/4)	yellowish gray (2.5Y5/1)	very small amount of white sand 1mm in diameter	Burnished on ext. surface Smoothed on int. surface Red slipped on exterior surface and rim
7: 13	EB I(B)-II	Holemouth Jar	orange (2.5YR6/6)	orange (2.5YR6/6), dull yellowish orange (10YR7/4)	-	calcite fragments 1-3mm in diameter, amount of sand 1-2mm in diameter	Horizontally smoothed on both surfaces, spout below rim, coarse ware
7: 14	EB I(B)-II	Lamp bowl	dull orange (5YR6/4)	orange (5YR6/6)	dull yellow (2.5Y6/3)	amount of sand 0.5mm in diameter, calcite fragments 2mm in diameter	Partially red slip remains (red, 10YR5/6), lamp bowl with soot mark
7: 15	EB I(B)-II	Lamp bowl	dull orange (5YR6/4) (slip: red 10R5/6)	dull orange (7.5YR7/4) (slip: dark red 10R3/4- red 10R4/6)	Ext. side: yellowish gray (2.5Y4/1) Int. side: light gray (2.5Y7/3)	sand 1mm in diameter, limestone fragments 2-3mm in diameter	Burnished on both surfaces, lamp bowl
7: 16	EB I(B)-II	Holemouth Jar	dull orange (7.5YR6/4)	grayish brown (7.5YR5/2)	dull reddish brown (2.5YR5/4) - dull brown (7.5YR5/3)	amount of calcite fragments 1-2mm in diameter, small amount of sand 1mm in diameter	Horizontally smoothed on both surfaces, with soot mark on ext. rim?
7: 17	EB I(B)-II	Holemouth Jar	dull orange (7.5YR6/4)	dull orange (7.5YR6/4)	dull yellowish orange (10YR7/3)	sand 1mm in diameter, small amount of red sand 1-2mm in diameter, translucent sand 1-1.5mm in diameter	Smoothed on int. surface, thick calcite on ext. surface
7: 18	EB I(B)-II	Jug?	dull orange (2.5YR6/4)	dull orange (2.5YR6/4)	yellowish gray (2.5Y6/1)	sand 1-2mm in diameter, limestone fragments 0.5-3mm in diameter	Thumb-indentation on outer rim
7: 19	EB I	Jar base	dull reddish brown (2.5YR5/4)	light gray (5Y7/1)	brownish gray (10YR5/1)	small amount of sand 1mm in diameter	Horizontally smoothed on both surfaces
7: 20	EB I	Jar base	orange (5YR6/6)	orange (2.5YR6/6)	dull reddish brown (5YR5/4)	small amount of sand 1-1.5mm in diameter, very small amount of white sand 0.5-1mm in diameter	Horizontally smoothed on both surfaces
7: 21	Nab	Bowl	orange-bright reddish brown (2.5YR6/6-5/6)	orange-bright reddish brown (2.5YR6/6-5/6)	orange-bright reddish brown (2.5YR6/6-5/6)	black sand 0.1-0.5mm in diameter	wet smooth
7: 22	Rom-Byz	Jar	orange (2.5YR6/6)	orange (2.5YR6/6)	orange (2.5YR6/6)	black sand 0.1mm in diameter	wet smooth with wheel
7: 23	Rom-Byz	Jar	dull orange-orange (5YR6/4-6/6)	dull orange-orange (5YR6/4-6/6)	dull orange-orange (5YR6/4-6/6)	black and white sand 0.1-0.5mm in diameter	wet smooth with wheel
7: 24	Rom-Byz	(Base)	orange (2.5YR6/6-6/8)	orange (2.5YR6/6-6/8)	orange (2.5YR6/6-6/8)	black sand 0.1mm in diameter	wet smooth with wheel
7: 25	Rom-Byz	Bowl	orange (2.5YR6/6-6/8)	grayish brown (7.5YR6/2-5/2)	orange (2.5YR6/6-6/8)	black, white and gray sand 0.1-0.5mm in diameter	wet smooth with wheel
7: 26	Isl	(Base)	dull orange (7.5YR7/4)	orange (2.5YR6/8)	orange (2.5YR6/8)	black and white sand 0.1-0.5mm in diameter	wet smooth with wheel, black paint on buff slipped surface
7: 27	Ir?	(Base)	orange (2.5YR6/8)	orange (2.5YR6/8)	orange (2.5YR6/8)	black and white sand 0.1-1.5mm in diameter	wet smooth

8. List of selected small finds from registered sites in Area 7.

Comments: no special comment.

Site 07008

Site name: unknown.

Coordinates: 30°32.353N; 35°32.403E.

Elevation: 1474m.

Site location: located on the eastern slope of a small valley leading to Shawbak (**Fig. 6: 8**).

Site type: settlement.

Site size: ca. 4ha (ca. 200m north-south by ca. 200m east-west).

Preservation: relatively well preserved.

Surface finds: 39 pottery sherds (**Fig. 7: 21-27, Fig. 8: 21-27**).

Structural remains: many stone-built structural remains forming a 'conglomerate'.

Possible date: Ir, Hel, Nab, Rom - Byz and Isl (including a glazed pottery sherd).

Comments: There is a perennial spring ca. 50m north of the site, where various pottery sherds were collected.

Concluding Remarks

The brief survey has suggested (1) that the general occupational history of the western part of Areas 4 and 7 dates back to at least the Early Bronze Age, and (2) that it includes various forms of archaeological site, ranging from substantial settlements, through temporal occupations and isolated structural remains, to simple artifact scatters. Of particular interest is the EB I - II small settlement (Site 07004), the finds from which are suggestive of some cultural contact with the contemporary Negev Highlands as well as the Dead Sea plain. Subsequent surveys, scheduled for the spring and summer of 2012, will focus on the eastern half of the research area.

Sumio FUJII

School of Humanities

Kanazawa University

Kakuma-machi, Kanazawa

920-1192, Japan

fujiiikun@staff.kanazawa-u.ac.jp

Masatoshi YAMAFUJI

Japan Society for the Promotion of Science

School of Humanities

Kanazawa University

Kakuma-machi, Kanazawa

920-1192, Japan

m-yamafuji@staff.kanazawa-u.ac.jp

Yui ARIMATSU

Japan Society for the Promotion of Science

Faculty of Literature

Hiroshima University

1-2-3 Kagamiyama, Higashi-Hiroshima, Hiroshima

739-8522, Japan

yui_a_0513@yahoo.co.jp

Bibliography

Amiran, R., Paran, U., Shiloh, Y., Brown, R., Tsafrir, Y. and Ben-Tor, A.

1978 *Early Arad I: The Chalcolithic Settlement and Early Bronze City, First-Fifth Seasons of Excavations 1962-1966*. Jerusalem: The Israel Exploration Society.

Braun, E.

1997 *Yiftah'el: Salvage and Rescue Excavations at a Prehistoric Village in Lower Galilee, Israel*. IAA Report, No. 2. Jerusalem: The Israel Antiquities Authority.

Dubis, E., Marahlah, M.A.A. and Nawafiah, S.

2004 Two New Dolmen Fields in the ash-Showbak Area. *ADAJ* 48: 15-24.

Fujii, S.

2007 Wadi Badda: A PPNB Settlement below the Fjayj Escarpment in Southern Jordan. *Neolithics* 2/07: 19-23.

Rast, W.E. and Schaub, R.T.

2003 *Bâb edh-Dhrâ': Excavations at the Town Site (1975-1981)*. Winona Lake: Eisenbrauns.

Rollefson, G.

1981a A Lower Paleolithic Surface Site near Shobak, Wadi El-Bustan, Southern Jordan. *ADAJ* 25: 153-170.

1981b The Late Acheulean Site at Fjaje, Wadi El-Bustan, Southern Jordan. *Paléorient* 7/1: 5-21.

1985 Late Pleistocene Environments and Seasonal Hunting Strategies: A Case Study from Fjayj, near Shobak, Southern Jordan. *SHAJ* 2: 103-107.

Scheltema, G.

2008 *Megalithic Jordan: An Introduction and Field Guide*. Amman: American Center of Oriental Research.

Whiting, C.M., Fraser, J., Jakob, T., Miller, H. and Kehrberg, I.

2008 The First Preliminary Report of the South Jordan Iron Age II Survey and Excavation Project

S. Fujii et al.: The Shawbak North Archaeological Project 2011

- (SJIAP): the 2004, 2005 and 2006 Seasons of Excavation at Khirbat ad-Dabba. *ADAJ* 52: 255-278.
- 2009 The Second Preliminary Report of the South Jordan Iron Age II Survey and Excavation Project (SJIAP): the 2004, 2005 and 2006 Seasons of Surface Survey. *ADAJ* 53: 275-296.
- Yannai, E.
2006 *'En Esur ('Ein Asawir) I: Excavations at a Protohistoric Site in the Coastal Plain of Israel*. IAA report, No. 31. Jerusalem: The Israel Antiquities Authority.

