

FIGURINES AND IRON AGE OBJECTS FROM 'AMMĀN CITADEL

Sahar Mansour

This material is based upon work during 2000-2001 seasons at 'Ammān Citadel supported by the Ministry of Tourism and Antiquities with cooperation of the Department of Antiquities.

The total of 43 figurines and fragments from the Citadel makes a significant addition to the number of such object to have been found in scientifically excavated contexts. Many of the large number of Iron Age figurines known are surface finds, other excavated examples come from the great temple of 'Ammān, the excavations, American Center of Oriental Research, and from Zayadine's work at the Citadel with a small number from the other excavations.

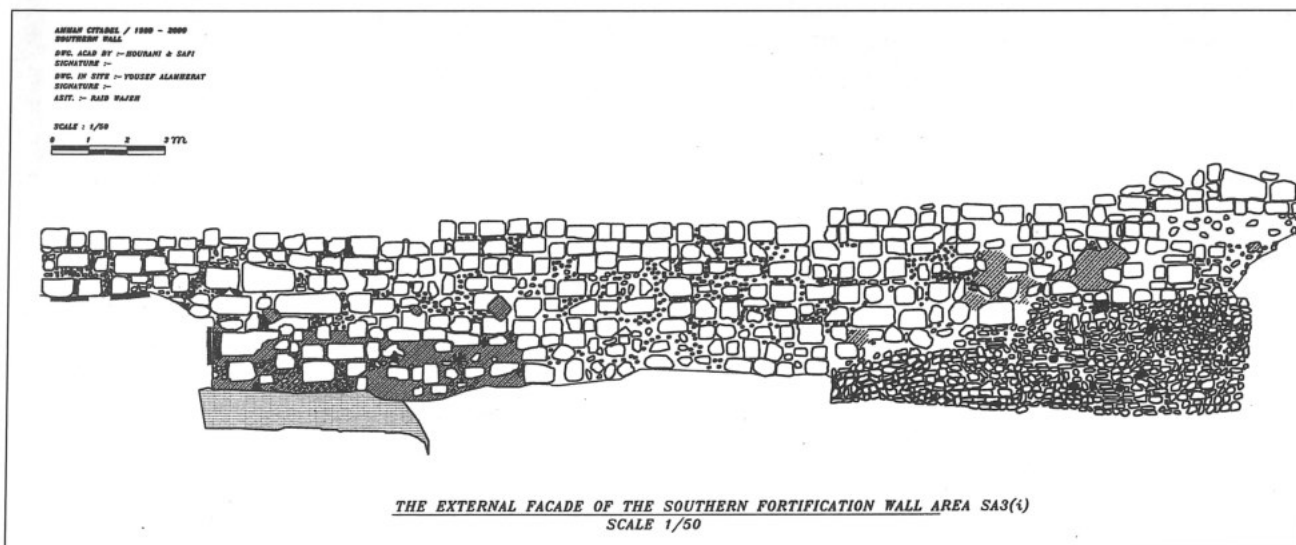
Of the Citadel finds, 28 are from well-stratified contexts, and the other ten are from the surface.

Nine stratified fragments were discovered in squares 8e and 9e in area Sa3 located outside the southern fortification wall at the lower terrace (**Fig. 1**) where two parallel walls were revealed. Between these parallel walls a floor was formed of a smooth surface of small stones over which the Iron Age deposits lay and produced fragments of clay figurines. Retrieved in an ashy soft soil layer, in-

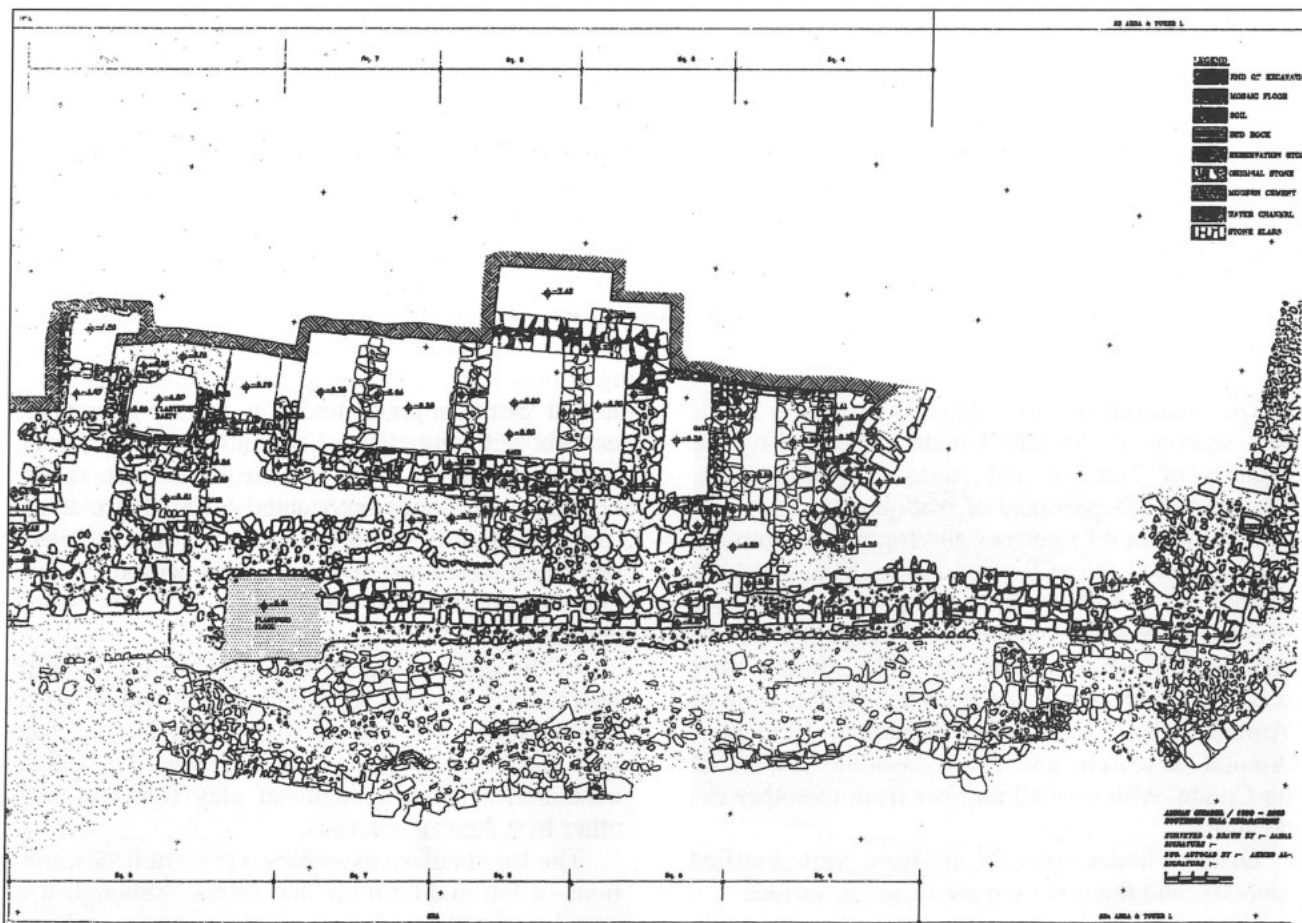
cluded sherds in good condition, clearly no conclusion about the function of the figurine can be drawn from the contexts, in which they were found, except that they were not treated with particular respect when disposed of in the floor. The fact that all except ten occurred in Sa3 Area presumably indicates that the figurine were in use somewhere near this part of the site.

At the interior line of the southern fortification wall at Area SEa are squares 4, 5, 6, 7 and 8, where the casemate wall was revealed (**Fig. 2**). Over the Iron Age floor of the casemate rooms the deposit contained a few fragments of clay figurines with other Iron Age II materials.

The fragmentary examples represent heads, portions of the middle body and limbs. Although it is now impossible to determine their shapes and size when complete sizes range from 5cm to 8cm in height. Most of the figurines to be considered here fall in to three groups: female figurines, male and animal figurines, non-human figurines. The use of molds is usually restricted to the face while the body is usually shaped by hand. The only exception are female figurine no. 43, most of these fig-



1. Two Parallel walls at the outer line of the southern fortification wall area.



2. Plan of Area SEa (sqs. 4, 5, 6, 7 and 8) and the casemate wall.

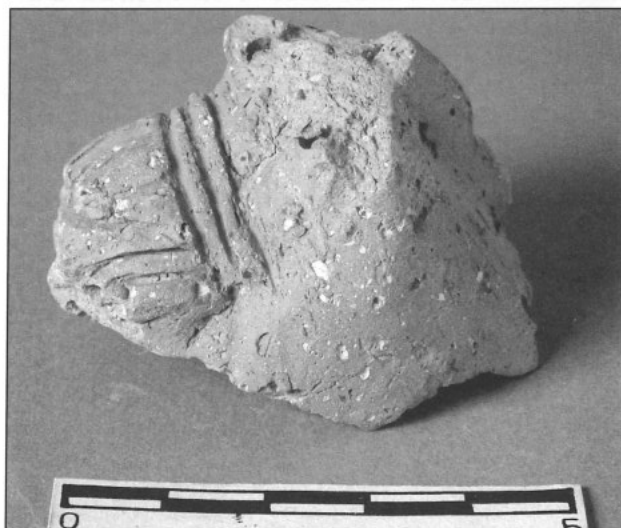
urines must be considered as plaques and apparently were not intended to stand by themselves. Few of the figurines have painted decoration similar to the black-white, black decoration against a pink or red background. These ceramic figurines are made of a reddish or pinkish buff fabric similar to that used to manufacture vessels, usually with large amounts of dark grey and lime grits. All the figurine examples are only a small fragments survives almost certainly representations of animal figures.

Catalogue of Figurines

All dimensions are given in centimeters. Colors are described according to the Munsell soil color charts (1994 revised edition).

Figurine no. 1: An animal head, possibly of a horse hollow shape, upper and lower parts of face missing the forehead of the animal is decorated with trapping, indicated by three pendants and incised lines, the eyes are smoothly pierced, the ears are broken and the nostrils are shown partly, the mane is visible at the neck of the horse fragmentary. Ext.: 2.5YR6/8 light red, core 10YR7/3

very pale brown, slip 2.5YR6/8. Slightly coarse with sand, lime red, gray inclusions, firing medium, height: 4.2cm, width: 3.9cm.



Figurine no. 2: Horse head is the color scheme black with white dot bands on red background. It has a long neck, pointed head and slightly elongated muzzle, the ears and eyes are indicated by paint-

ed pieces of applied clay, trapping is indicated by painted decoration, also there is a black bands dotted with white color encircling the neck, at the back of the head is a high piece of clay with a black band. Prominent manes, which stand out on the neck and drop steeply on the forehead and the nose is slightly pierced. Slightly coarse with sand and lime inclusions firing, core uneven. Ext.: 2.5 YR7/6 light reddish brown, int.: 7YR5/1 gray, core. Height: 6.2cm, width: 2.6cm, parallel example from 'Ammān (Dorneman 1983: 186: 9).



Figurine no. 3: A portion of the hindquarters and tail with the beginning of back legs probably horse. In the middle are remains of a saddle preserved. It has a hollow body, and the tail rises and curves down between the legs of the animal there



is a deep pierced hole between the tail and the saddle, it seems to be a horse without rider the legs are broken. It is made of a slightly coarse with sand, lime, straw and red, gray stones inclusions. Firing high. Ext.: 7.5YR8/4 core 5YR8/3 pink, int.: 5YR 7/5 reddish yellow. Height: 4.1cm, width: 3.4cm, Length: 6cm (Harding 1945: Pl. XVIII. fig. 41, 1950a: Pl. XIII. fig. 1).

Figurine no. 4: A portion of the hindquarters and tail of an animal, short legs one of them missing hollow body, and the tail curves down between the legs of the animal there is a deep pierced hole near the tail, and it has a cylindrical body. It is made of a slightly coarse, with sand, lime, straw and red, gray stones inclusions. Firing high. Ext.: 2.5 YR7/6 light reddish brown, int.: 7YR5/1 gray, core. Height: 4.3cm, width: 3.3cm, Length: 5.2cm (Dornemann 1983: fig. 86, no. 9).



Figurine no. 5: A fragment of rare animal body with the beginning of the legs. It is characterized by a short rising tail, cylindrical hollow body, small pierced hole near the tail, and made of very coarse with sand, lime, straw and, gray stones inclusions. Firing medium, int.: 10YR 8/2. Ext.: 2.5 YR7/6 light reddish brown. Height: 3cm, width: 3.5cm.

Figurine no. 6: A horse head, hollow inside, probably belonged to a libation pot, reins indicated by incised lines. The forehead of the animal is decorated with trappings, indicated by two pendants, the eyes and mouth are deeply pierced and so the ears, the lower part of the head is missing. It is made with a very coarse with sand, lime, straw and gray stones inclusions. Firing core uneven. Int.:



10YR 8/2. Ext.: 2.5 YR7/6 light reddish brown. Height: 3.5cm, width: 3.3cm.

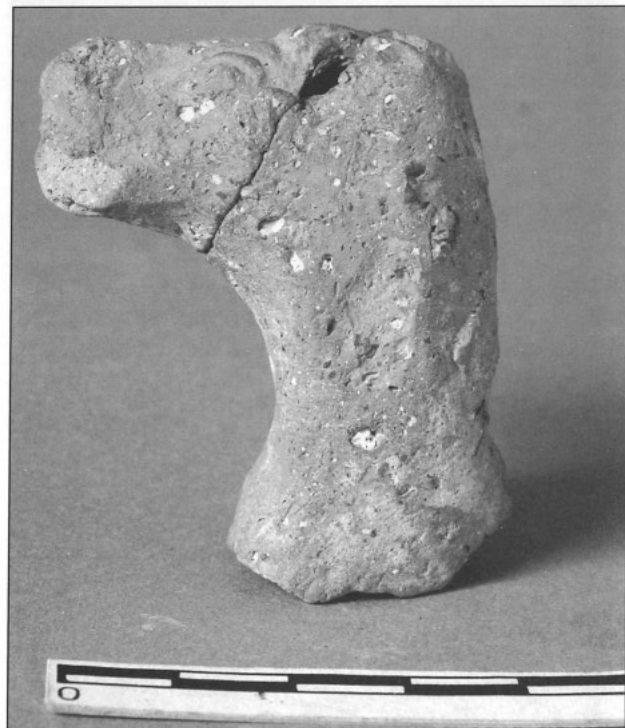


Figurine no. 7: Cow head of black pottery the nostrils and eyes are slightly pierced, parts of ears and horns missing, the mouth is indicated by an incised line. Ware: 10YR.5/2 grayish brown, slip: 7.5YR6/4 light brown. Grits lime stones, grog and flint grits. Good firing slightly coarse with sand and gray inclusions. Height: 3.5cm, width: 3.9cm (Crowfoot 1957: Pl. 76ff, fig. 1).

Figurine no. 8: A head of a horse with a long neck the shock of hair from the mane, rests on the forehead, indicated by incision the eye of the animal is disproportionately big, and the pupils indicated by pieces of applied clay. The slightly, incised lines strap around nose indicate trappings and incisions in front of eye are not complete. It is



made of a slightly coarse and lime, straw and red, gray stones inclusions. Firing high. Slip: 9YR7/6 light reddish brown. Int.: 7YR5/1 gray. Height: 5.2cm, width: 2.2cm (Dorenmann 1983: Pl. 86, fig. 7).



Figurine no. 9: A head of animal, probably camel the forehead of the animal is decorated with trap, indicated by two incised pendants the eyes and nostrils are deeply pierced, two incised bands encircle the neck, the head is a high piece of clay indicating prominent mane. It is made of slightly coarse sand, with lime, straw and gray stones inclusions. Firing: high. Ext.: 7.5YR 8/4, core 5YR8/

3 pink. Int.: 5YR 7/5 reddish yellow. Height: 4cm, width: 2.5cm (Dorenmann 1983: Pl. 89, fig. 5).



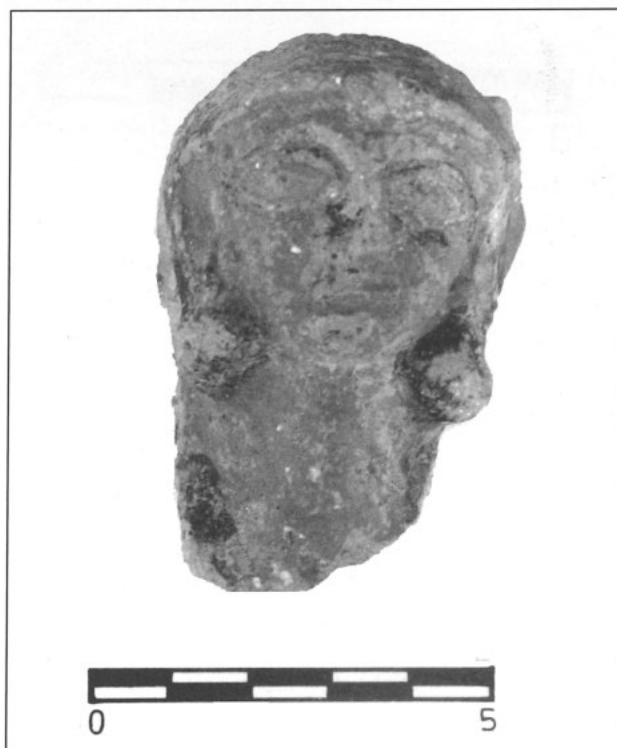
Figurine no. 10: An animal body the remains of legs are represented and a cylindrical hollow body, short rising tail, deep hole near the tail another hole but very big between the front legs probably the place of the head. It is very coarse with sand, lime, straw and gray stones inclusions. Firing: medium. Int.: 10YR 8/2. Ext.: 2.5 YR7/6 light reddish brown. Height: 3.3cm, width: 3cm, length: 8.2cm.



Figurine no. 11: The head and face seem to have been mold made. The woman wears a pointed cap band at its base decorated with eight incised vertical lines, eyes, nose and mouth molded on the face with the fingers, it has large almond-shape eyes and the cheekbones are nicely molded as is the short slightly chin, the face is beautifully formed. It is slightly coarse with sand, lime, straw and red, gray stones inclusions. Int.: 10YR 8/2. Ext.: 2.5 YR7/6 light reddish brown. Height: 2cm, width: 4.6cm.



Figurine no. 12: Female head, hair styles seem to have been parted in middle with five locks of hair (shown on the top of the head) which curve down covering the ears and along side the face; the hair is longer at the side than on the other. It molds and extends to the level of chin in fairly row tresses. A band over the forehead with attachment to the hair, which seems to be a cloth. Big almond — shape eyes, and the lids depicted as a ridge around the eye, it has a long cheekbone, the nose is missing and so is a part of lips. Height: 5cm, width: 3.6cm.



Figurine no. 13: A face of women with big features, (could be a part of vessel) big eyes, incised arced eye-brows, painted with black color, the ear is much larger than normal in proportion to the face, and has an earring with two big balls pendant, the cheek bones are high, and the head band is decorated with jewelry in the middle, the hair is at the sides of the face and is painted dark brown and indicated that, as is true which the curve down behind the ears, it extended to the shoulder, the neck is wide and was painted with black. The nose and part of lip are broken, a horizontal incised line marks the mouth. Height: 6.4cm, width: 4.5cm.



Stratified Fragment

Figurine no. 14 — incomplete (Area Sa3, Sq. 8e, loc. 14): A horse's head with part of a hollow neck, the ears were partly chipped and the eyes sockets and ears are indicated by deep holes of almost same size. There are raised horizontal lines and punctured dots across the forehead and between eyes and nose. Nostrils and muzzle are missing, but the trappings are preserved as three incised lines go around the neck of the horse and also indicated by a dotted strap and two rectangular pendants at the forehead, which relates to the harness, the eyebrow and eye are vertically incisions. It is slightly coarse with sand, lime, straw and red, gray stones inclusions. Firing core uneven. Int.: 10YR 8/2. Ext.: 2.5 YR7/6 light reddish brown. Height: 5.5cm, width: 4.9cm (Koutsoukou *et al.* 1997: Pl. 30, figs. 22, 23).



Figurine no. 15 (Area SEa, Sq. 5): Horse's head with part of hollow neck. The ears and lower part of muzzle are broken and there are holes partly pierced in the middle of the rounded eyes to represent irises,



the harness is represented by incised horizontal lines across the mouth, the nose is indicated by holes and the mouth is pierced by a big hole which goes through the neck, a piece of clay comes out to indicate a blinker. The mane is visible at the neck of the animal, incised lines go around the neck are related to the harness. Firing: uneven core. It is a slightly coarse with sand, lime, straw and red, gray stones inclusions. Int.: 10YR 8/2. Ext.: 2.5 YR7/6 light reddish brown. Height: 5cm, width: 3.1cm.

Figure no. 16 (Area SEa, Sq. 4): A head of a large horse figurine with the remains of a wide neck. The ears are erect and indicated by a hole for each one in different size. The eyes sockets are indicated by deep holes, almost of the same sizes. Two incised horizontal lines across the forehead indicate the harness, raised lines around the eye sockets mark the eye brow, eye-lids and the pupils in the middle are represented by small incised hole, trace of incised lines across the forehead and cheek indicated harness, a muzzle is partly missing. The figurine is pierced from its mouth to its neck; a raised mass of clay indicated the mane, and incised horizontal lines around the neck indicate the harness. Firing: uneven core, slightly coarse with sand, lime, straw and red, gray stones inclusions. Ext.: 5YR 6/6 reddish yellow. Int.: 5YR 8/3 pink, slip: 5YR 5/8 yellowish red. Height: 8.3cm, width: 3.9cm.



Figure no. 17 (Area SB4, Sq. 3, Loc. 21): A head of a animal with remains of a hollow neck. The ears are erect and indicated by a hole on each side, almost the same sizes as the eyes holes; the forehead of the animal is decorated with trapping, indicated by rectangular pendants; pierced mouth and eyes are indicated with large depressions for pupils. The muzzle and nostril are missing, trappings are preserved at the back of the neck of the horse by incised lines. An incised raised mass of clay indicates the mane. Molded face. Firing: high, coarse with sand, lime, straw and red, gray stones inclusions. Ext.: 5YR 6/6 reddish yellow. Int.: 5YR 8/3 pink, slip: 5YR 5/8 yellowish red, height: 3.5cm, width: 4.5cm.



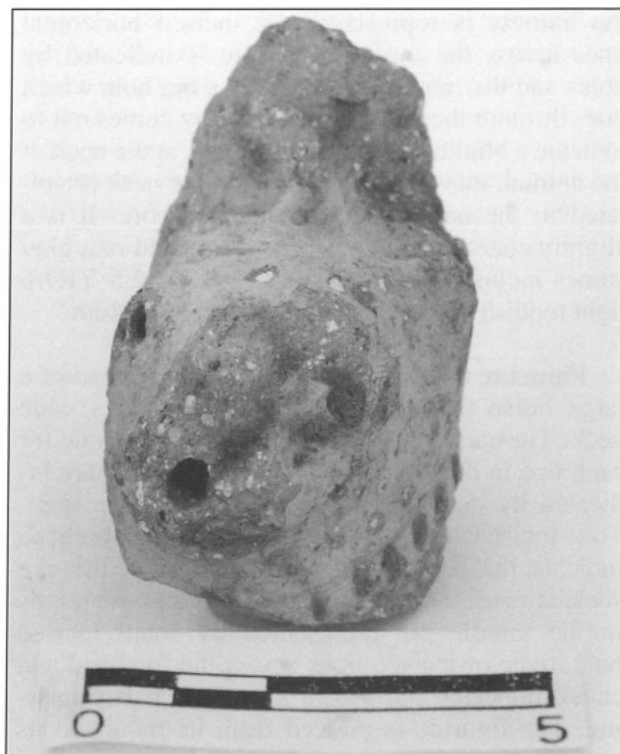
Figure no. 18 (Area SEa, Sq. 4): Head of a horse, figurine with remains of neck, which shows that it was hollow. Eyes and eyes brow are vertically indicated, incised features include bridle without cheek-pieces, but with straps coming from the top of a noseband to the brow band. The mouth is a deeply pierced, raised horizontal lines across the forehead between the eyes and nose indicating the harness; the ears are represented and are vertically pierced. It is slightly coarse with sand, lime, straw

and, gray stones inclusions. Firing core uneven. Ext.: 7.5YR8/4, core 5YR8/3 pink, int.: 5YR 7/5 reddish. Height: 4.1cm, width: 3.1cm.

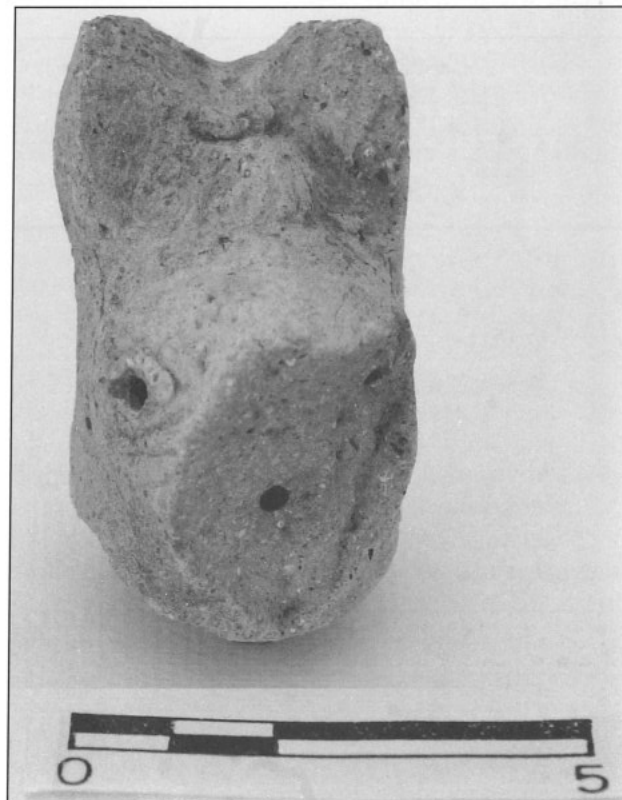


Figure no. 19 (Area SEa, Sq. 5): Head of a horse figurine with remains of neck, which shows that it was hollow; the eye brow is represented by an elongated incised line; the mouth is pierced through to the neck but the nose, mouth and right eye were missing; trappings are preserved at the neck of the horse and are indicated by a dotted strap framed by two lines; the mane shows at the neck of the animal; the ears are partly represented. It is coarse with sand, lime, straw, and gray stones inclusions. Firing core uneven. Ext.: 7.5YR 8/4 core 5YR8/3 pink, int.: 5YR 7/5 reddish. Height: 6cm, width: 4.1cm.

Figure no. 20 (Area SEa, Sq. 5): Part of a horse head, figurine with remains of neck, which, shows that it was hollow; the muzzle and right eye are missing, the forehead of the animal is decorated with trappings indicated by rectangular pendants; the mane is visible on the face and on the neck of the animal and indicated by incised line



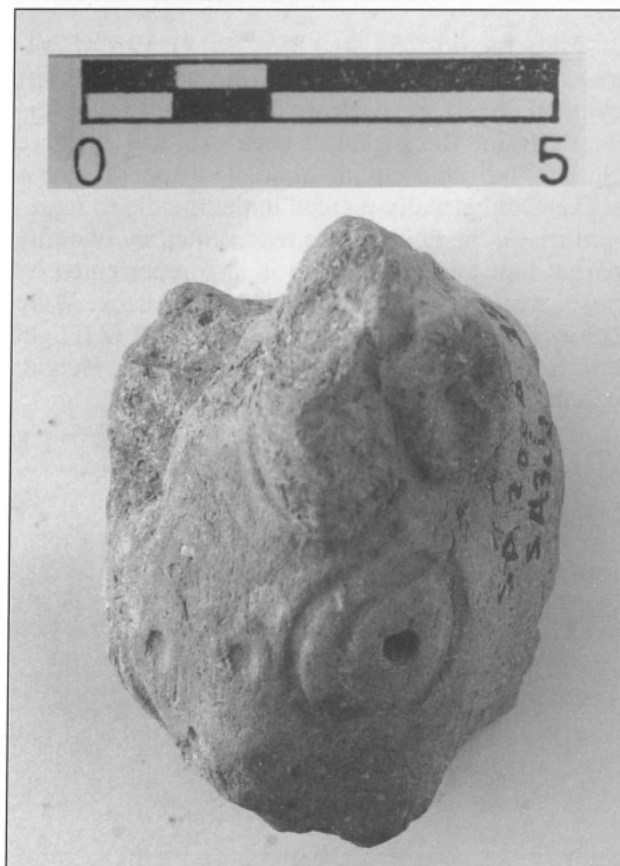
around the neck; the ears are missing. It is coarse with sand, lime, straw and, gray stones inclusions. Firing core uneven. Ext.: 7.5YR8/4, core 5YR8/3 pink, Int.: 5YR 7/5 reddish. Height: 5.9cm, width: 3.3cm.



Figurine no. 21 (Area SEa, Sq. 8): Animal head figurine- the right eye, mouth, nostril and jaw were broken. Incised lines mark out the eye-lids, and the pupils in the middle are represented by small incised holes. Incised lines across the forehead and another traces of incised lines on remains of cheek and around the neck indicated a harness. Ware color: 10YR.5/2 grayish brown, slip color: 7.5YR6/4 light brown. Good firing, grits lime stones, grog and flint grits. Height: 6cm, width: 3cm.



Figurine no. 22 (Area SEa, Sq. 40): Head of a horse figurine with remains of the neck, which shows that it was hollow. The nose and mouth are missing, the eye-lids are marked out by incised lines and the pupils in the middle are represented by incised holes. Trace of an incised line across the forehead and another incised line on the horse cheek indicated a harness. The mane is visible on the neck of the horse. Ware color: 2.5YR7/6 light red, slip color: 5YR: 7/4 pink. Molded, full of grog lime stones grits of small sizes. Height: 6.5cm, width: 3.5cm.



Figurine no. 23 (Area SEa): Head of animal hollow figurine. The right side of the face is missing. The nose and ears are partly broken. The eye-brows are incised vertically and the eye are clearly indicated, with incised dots in between are visible on the forehead and the pupils in the middle are represented by deep incised hole, the mouth is pierced and face has been pressed in to a mold while the back of the head is roughly pared of. Ware color: 2.5YR7/6 light red, slip color: 5YR: 7/4 pink. Molded. Height: 5.5cm, width: 4.2cm.

Figurine no. 24 (Area SEa, Sq. 4): The upper part of large animal figurine (the ears) trapping are preserved at the back neck of the horse by an incised line and dots. The mane is visible as a raised mass of clay between the ears. Ware color:

2.5YR7/6 light red, slip color: 5YR 7/4 pink. Molded, full of grog lime stones grits of small sizes. Height: 5cm, width: 4.1cm.



Figure no. 25 (Area SEa, Sq. 4): Part of hollow head which could be bovine part of the left eye and cheek are broken. Two incised lines vertically frame the socket of each eye, and eyes are clearly indicated in an almond shape. The eye sockets are partially pierced in the middle to represent irises, the nose is also represented by two tiny partial holes and the mouth is also represented by holes which goes through the broken neck. Ware color: 7.5YR 8/4 pink. Slip color: 2.5YR 6/ 6 light red. Good firing, molded, grits lime stones. Height: 4.2cm, width: 3.1cm.



Figure no. 26: A portion of the hindquarters and tail with the beginning of back legs probably for horse. The tail rises, and the legs are missing. It is hand made. Ext.: 10YR6/6 light red, core 7.5YR8/2 pinkish white, int.: 5YR7/6 reddish yellow, slightly coarse with sand, lime gray inclusions. Firing: high. Height: 3.1cm, width: 2.8cm.



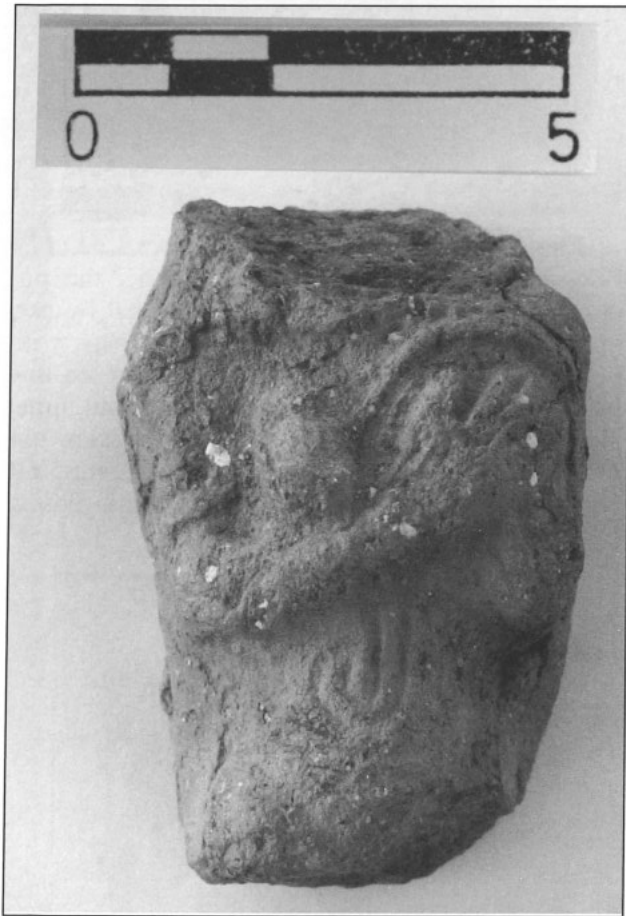
Figure no. 27 (Area SEa): Part of hollow head could be bovine the right side, neck and upper part of the head are missing. The eyes are clearly indicated in an almond shape. Ware color: 7.5YR 8/4 pink, slip color: 2.5YR 6/ 6 light red. Good firing, molded, grits lime stones.



Human Figurines

Figurine no. 28 (Area SEa): This fragment of a female figurine includes part of a torso and lacks head and feet. One breast is visible, while the other one is covered by an unknown object, perhaps a musical instrument (tambourine) with three alternating lines indicating the strings held to the figurine chest. The hands and arms are clearly represented by the circular objects. The waist is indicated by incised lines or belt, and incised lines on body, bracelets and armlets.

It is very roughly hand made finish on the back. Very coarse with sand, lime straw and red, gray inclusions. Firing core is uneven. Height: 6.8cm, length: 3.3-4.6cm, width 2.4-2.8cm. Color: 2.5YR7/6 light red, slip color: 5YR: 7/4 pink. Molded, full of grog lime stones grits of various sizes (Dornemann 1983: Pl. 89, fig. 3).

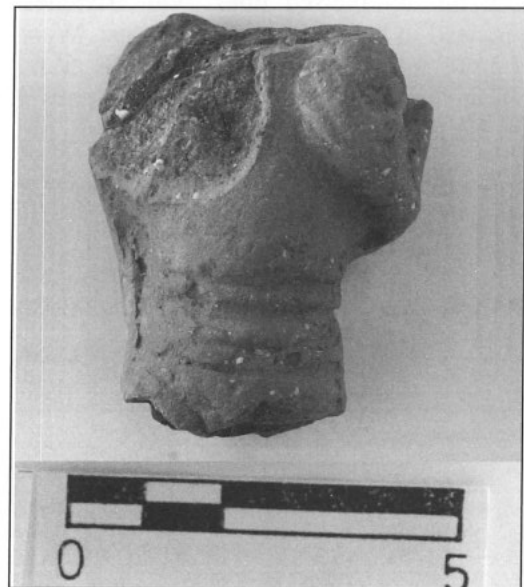


Figurine no. 29 (Area SEa): Fragment of female figurine part of a torso of a dressed woman. It lacks head and feet. It is holding in both hands an unknown object, apparently a musical instrument (tambourine). The palms of both hands are against the tambourine. The edge of the instrument is formed by three concentric raised circles with a

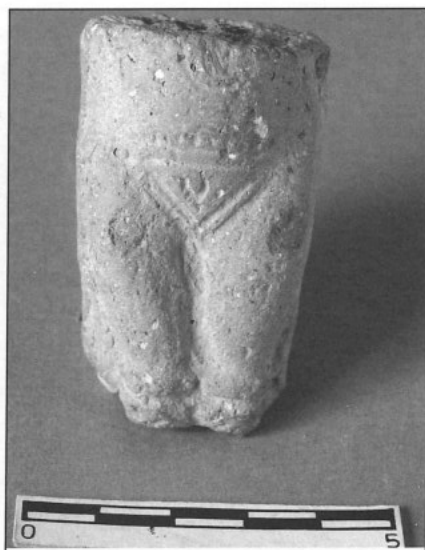
row of dots between the inner two. One breast is visible while the object covers the other one. Two rows indicate the decorated clothes, each row is indicated by two parallel lines, the upper one is filled with a line of dots while the other is filled with a row of triangles. Ware color: 10YR.5/2 grayish brown, slip color: 7.5YR6/4 light brown. Good firing, grits lime stones, grog and flint grits. Height: 6.5cm, width: 4.4cm (Dornemann 1983: Pl. 89, fig. 3; James 1966: 112, fig. 5).



Figurine no. 30 (Area SEa): Torso of a pregnant woman, the left hand holding the breast while the right hand is missing. An incomplete pierced hole indicates the navel, the waist is also marked out by incised lines. Incised lines are seen on the belly. Height: 5.6cm, width: 3.2cm.



Figurine no. 31 (Area SEa): The bottom portion of a pregnant woman figurine, the pudenda is indicated and incised, and there is a slightly incised circular to indicate the navel. The anklets are indicated by incised lines on slightly raised bands of clay, with the legs being solid in between. The feet are missing. Ware color: 7.5YR 8/4 pink. Slip color: 2.5YR 6/ 6 light red. Good firing, molded, grits lime stones blues ochre. Height: 5.7cm, width: 3.5cm.



Figurine no. 32 (Area Sa3, Sq. 9e, Loc. 15): The lower portion of dressed human figurine, missing from the waist and up. The legs are not separated, the toes are indicated by incised lines on a stump base, and the anklets are represented by incised lines on slightly bands of clay, with legs being solid in between. The abdomen is also marked out by incised lines, with triangles and dots incised in between, mark the waist. Ware color: 7.5YR 8/4 pink. Slip color: 2.5YR 6/ 6 light red. Bad firing, molded grits lime stones blues ochre. Height: 6.4cm, width: 3.2cm.



Figurine no. 33 (Area SEa): Nude torso of a pregnant figurine, the right leg is missing and so are the feet. The waist is marked out by incised dots and the navel is also indicated. Pierced hole indicates to pudenda, the thighs are separated. Color: 2.5YR7/6 light red. Slip color: 5YR7/4 pink. Molded, full of grog lime stones grits of small sizes. Height: 5cm, width: 3cm.



Figurine no. 34 (Area Sa3, Sq. 9e, Loc. 11): Lower portion of nude human figurine, the pudenda is incised, the anklets are indicated by two incised lines on slightly raised bands of clay, with the legs, and the toes are indicated by incised line on a stump base. It is coarse ware with sand, lime, straw, and gray stones inclusions. Firing core uneven. Ext.: 7.5YR8/4, core 5YR8/3 pink, int.: 5YR 7/5 reddish yellow. Height: 7.2cm, width: 3.2cm (Zayadine 1973: 29, Pl. 20).



Figurine no. 35 (Area Sa3, sq 9e, loc 11): Lower portion of nude figurine-missing from the hips up. This is the plaque type, molded with one mould. The pudenda is indicated and incised, the legs are separated, the anklets and feet are missing. Very coarse with sand, lime, straw and red, gray inclusions. Firing; core -uneven. Height: 4.3cm, width: 4cm.



Figurine no. 36 (Area Sa3, sq 8e, loc 14): Bottom portion of human figurine-missing from the hips up. The legs are separated, feet are showing, the anklets are indicated by two incised lines on slightly raised bands of clay, and the toes are indicated by a slight line on stump base. Ware color: 10YR.5/2 grayish brown, slip color: 7.5YR6/4 light brown. Good firing, grits lime stones, grog and flint grits. Height: 5.1cm, width: 3.1cm.



Figurine no. 37 (Area Sa3, Sq. 8e, Loc. 14): Lower portion of human figurine-missing from the hips up. The legs are separated and they end in stump-like base, anklets are indicated by four incised lines on slightly raised bands of clay, and feet are showing. Ware color: 7.5YR 8/4 pink. Slip color 2.5YR 6/6 light red. Bad firing, molded, grits lime stones blues ochre. Height: 4.5cm, width: 3.1cm. Parallel example from Hazor III-IV (Yadine 1957-58: CCLIII, no. 8).



Figurine no. 38 (Area Sa3, Sq. 8e, Loc. 14): Lower portion of figurine missing from the waist up. The feet are partly broken, the legs are not separated, there are incised decoration lines up the waist, which indicated by band or belt. It is roughly hand made. It is slightly coarse with sand, lime straw, and red gray inclusions, firing core is uneven. Ware color: 7.5YR 8/4 pink. Slip color: 2.5YR 6/6 light red. Height: 6.5cm, width: 2.4cm.



Figurine no. 39 (Area Sa3, Sq. 8e, Loc. 14: The stamp feet of this figurine are incised lines to indicate toes, and has a trace of anklets still visible, firing core is uneven. Ext.: 2.5 YR7/6 light reddish brown, int.: 7YR5/1 gray. Height: 3cm, width: 3cm.



Figurine no. 40: Classified as a female head, the eyes, nose and mouth are crudely executed. The head is wearing a head cover. Ware colors are not clear. Slip color 2.5YR7/6 light red. Bad firing, molded, full of flint and limestone's grits of several size. Height: 3.5, width: 3.9cm. The typical example was found at Megiddo II (Lamon 1948: Pl. 243 no. 23).



Figurine no. 41 (Area SEa, Sq. 4): Female head, it is oval in shape, with a pointed top. Some parts are applied, as for example the ear ornament and diadem. The ears and eyes are clear while nose is scratched. The head and the face seem to have been mold made. Ware color: 2.5YR6/6 light red, slip color: 7.5YR7/4 pink, medium to good firing. Height: 4.5cm, width: 2.9cm.



Figurine no. 42 (Area SEa, Sq. 4): A part of dressed female figurine, with a head cover. The lower part is missing, there is a schematic of the right hand on the shoulder, the left hand is missing, the feature of the face are crudely executed, the eyelids are marked out by incised lines, and the pupils in the middle are represented by tiny pierced holes. The right ear is formed by an applied piece of clay. While the left one is missing, the remains of the breast are shown on the chest. Coarse with sand, lime, gray inclusions. Ext.: 5YR 7/4 pink, firing: core uneven, slip 2.5YR 6/6 light red 5/6 red. Height: 8.5cm, width: 4.8cm. Megiddo II (Lamon 1948: Pl. 205: 13).



Figurine no. 43: The preserved portion of this figurine is from the shoulders to just below the waist. The tambourine is held over, covers the left breast. The left hand supports it from underneath and the right hand, positioned against its lower left quadrant, is shown as if steadying or beating it, the palms of both hands are against the tambourine. The edge of the instrument is formed by concentric raised circles. Two rows of the decorated skirt are illustrated. Each row is indicated by parallel lines, row two, row three and two triangles row, this is extended so far below the waist that the representation of a decorated skirt, filled with a row of triangles the parallel examples came from Tall al-Fār'a (Chambon 1984: 63, Pl. 84, fig. 2), Beth Shan (James 1966: 112, fig. 5), Irbid (Dajani 1966c: 80-101)



Sahar Mansour
Department of Antiquities
P.O. Box 88

Bibliography

- Chambon, A.
1984 *Tell el-Far'ah I. Liage du Fer. Edition Recherche Sur les civilisation. Paris.*
- Crowfoot, J.W., Crowfoot, G.M. and Kenyon, K.M.
1957 *The Object of Samaria, Vol. 3. Samaria-Sebaste. London.*
- Dajani, R.
1966a An Iron Age Tomb from Amman. *ADAJ* 11: 41-47.
1966b Jabal Nuzha Tomb at Amman. *ADAJ* 11: 48-52.
1966c Four Iron Age Tomb from Irbid. *ADAJ* 11: 88-101.
- Dornemann, H.R.
1983 *The Archaeology of the Transjordan in the Bronze and Iron ages. Wisconsin: Milwaukee Public Museum.*
- Koutsoukou, A., Russel, K., Najjar, M., Momani, A.
1997 *The Great Temple of Amman: The Excavation. The American Center of Oriental Research. Amman: National Press.*
- Hadidi, A.
1987 An Ammonite Tomb in Amman. *Levant* 19: 101-20.
- Harding, G.L.
1945 Two Iron Age Tombs, Amman. *QDAP* 11: 64-74.
1948 An Iron Age Tomb in Sahab. *QDAP* 13: 92-102.
1950 An Iron Age Tombs, at Meqabelein. *QDAP* 14: 44-48.
1951a Two Iron Age Tombs in Amman. *ADAJ* 1: 37-40.
1951c Excavations on the Citadel, Amman. *ADAJ* 1: 7-16.
- James, F.
1966 *The Iron Age at Beth Shan: A Study of Levels-IV. The University Museum, University of Pennsylvania.*
- Lamon, R.S. et al.
1948 *Megiddo II Seasons of 1935-39. Oriental Institute publications: Chicago press.*
- Lliffe, J.H.
1945 Imperial Art in Trans-Jordan: Figurines and Lamps from a Potter's Store at Jerash. *QDAP* 11: 1-26.
- Zayadine, F.
1973 Recent Excavations on the Citadel of Amman. *ADAJ* 18: 17-35.
1977-78 Excavations on the Upper Citadel of Amman, Area A (1975-1977). *ADAJ* 22: 20-56.
1987 Recent Excavations on the Citadel of Amman (Lower Terrace): A Preliminary Report. *ADAJ* 31: 299-311.
1988 The 1988 Excavations on the Citadel of Amman-Lower Terrace, Area A. *ADAJ* 33: 357-63.